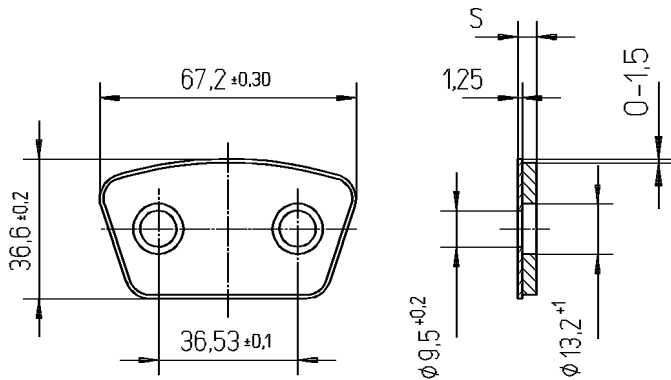


Bhk-Segment

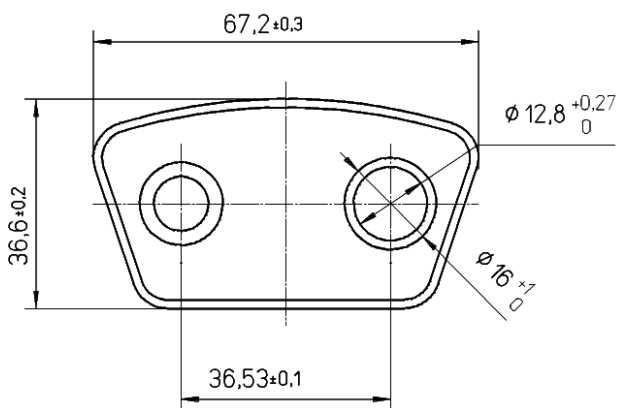


Teil Nr. Part no.	Miba Nr. Miba no.	Thickness inch	Stärke mm	Bemerkung Remarks
Bhk 110.280	76 50961	.110	2,8	
Bhk 118.300	76 50962	.118	3,0	
Bhk 125.320	76 50833	.125	3,2	
Bhk 140.360	76 50834	.140	3,6	
Bhk 150.380	76 50835	.150	3,8	
Bhk 156.400	76 50836	.156	4,0	
Bhk 173.440	76 50838	.173	4,4	
Bhk 187.480	76 50839	.187	4,8	

Bitte T-Nieten verwenden / Please use T-Rivets

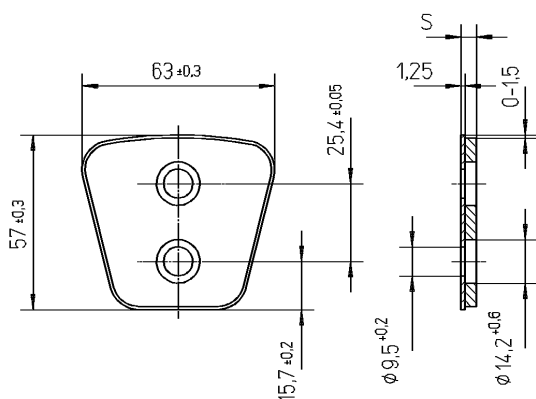
Bhk-Segment with different holes

Bhk-Segment mit ungleichen Löchern



Teil Nr. Part no.	Miba Nr. Miba no.	Thickness inch	Stärke mm	Bemerkung Remarks
Bhk 150.380UL	76 50548	.150	3,8	
Bhk 165.420UL	76 50685	.165	4,2	o.r.

Bv-Segment



Teil Nr. Part no.	Miba Nr. Miba no.	Thickness inch	Stärke mm	Bemerkung Remarks
Bv 110.280	76 60568	.110	2,8	o.r.
Bv 125.320	76 50840	.125	3,2	
Bv 140.360	76 50841	.140	3,6	
Bv 150.380	76 50842	.150	3,8	
Bv 156.400	76 50843	.156	4,0	
Bv 165.420	76 50844	.165	4,2	
Bv 173.440	76 50845	.173	4,4	
Bv 187.480	76 50846	.187	4,8	
Bv 209.530	76 50847	.209	5,3	
Bv 218.550	76 50848	.218	5,5	
Bv 229.580	76 50849	.229	5,8	

Bitte T-Nieten verwenden / Please use T-Rivets

Technical drawing of a mechanical part, showing front and side views with dimensions.

Front View Dimensions:

- Overall width: $64,2^{+0}_{-0,6}$
- Overall height: $57,1^{+0}_{-0,6}$
- Distance from top edge to center of holes: $14,2^{+0,6}_0$
- Distance from bottom edge to center of holes: $32,2^{+0,1}_0$
- Distance between hole centers: $36,6^{+0}_{-0,2}$

Side View Dimensions:

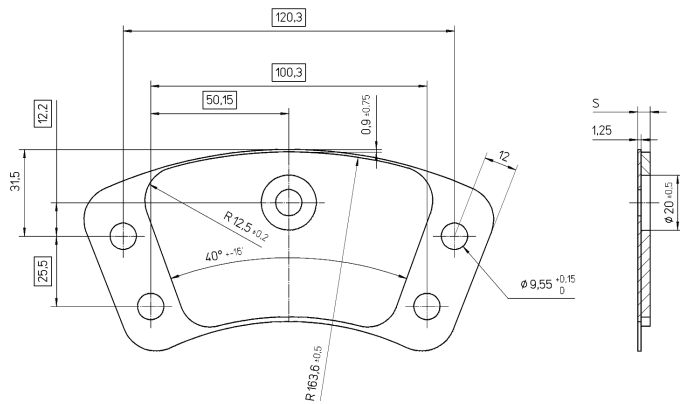
- Overall thickness: $1,25 \pm 0,05$
- Distance from bottom edge to start of hole: $0-1,5$
- Hole diameter: $\varnothing 9,5^{+0,2}_0$
- Feature 'S' is indicated on the top surface.

Teil Nr. Part no.	Miba Nr. Miba no.	Thickness inch	Stärke mm	Bemerkung Remarks
Bh 125.320	76 50850	.125	3,2	
Bh 140.360	76 50851	.140	3,6	
Bh 156.400	76 50853	.156	4,0	
Bh 173.440	76 50855	.173	4,4	
Bh 187.480	76 50856	.187	4,8	
Bh 218.550	76 50857	.218	5,5	

Teil Nr. Part no.	Miba Nr. Miba no.	Thickness inch	Stärke mm	Bemerkung Remarks
GBv 125.320	76 50858	.125	3,2	
GBv 140.360	76 50859	.140	3,6	
GBv 150.380	76 50860	.150	3,8	
GBv 156.400	76 50861	.156	4,0	
GBv 173.440	76 50862	.173	4,4	
GBv 187.480	76 50863	.187	4,8	
GBv 218.550	76 50864	.218	5,5	

Teil Nr. Part no.	Miba Nr. Miba no.	Thickness inch	Stärke mm	Bemerkung Remarks
4GB 138.350	76 50684	.138	3,5	o.r.
4GB 140.360	76 50698	.140	3,6	
4GB 156.400	76 50699	.156	4,0	
4GB 174.442	76 50746	.174	4,42	
4GB 187.480	76 50700	.187	4,8	
4GB 199.505	76 50747	.199	5,05	
4GB 218.550	76 60691	.218	5,50	

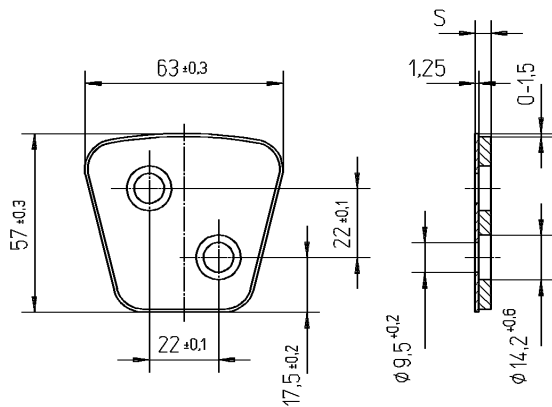
5GB-Segment



Teil Nr. Part no.	Miba Nr. Miba no.	Thickness inch	Stärke mm	Bemerkung Remarks
5GB 180.460	76 50572	.180	4,6	
5GB 197.500	76 60548	.197	5,0	

Bitte T-Nieten verwenden / Please use T-Rivets

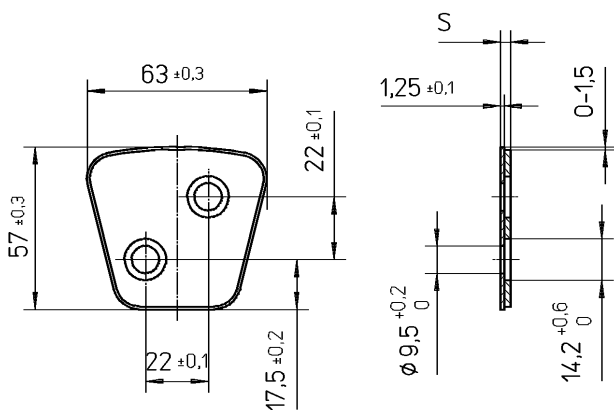
BD-Segment



Teil Nr. Part no.	Miba Nr. Miba no.	Thickness inch	Stärke mm	Bemerkung Remarks
BD 138.350	76 50968	.138	3,5	
BD 150.380	76 50782	.150	3,8	
BD 156.400	76 50769	.156	4,0	
BD 173.440	76 60706	.173	4,4	
BD 197.500	76 50783	.197	5,0	

Bitte T-Nieten verwenden / Please use T-Rivets

BD/R-Segment

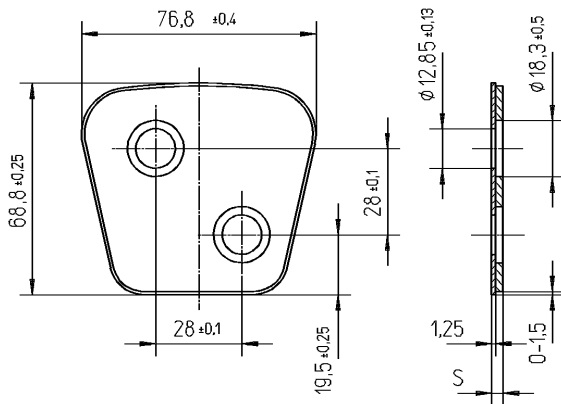


Teil Nr. Part no.	Miba Nr. Miba no.	Thickness inch	Stärke mm	Bemerkung Remarks
BD 138.350 R	76 50526	.138	3,5	
BD 150.380 R	76 50527	.150	3,8	
BD 156.400 R	76 50528	.156	4,0	
BD 173.440 R	76 60707	.173	4,4	
BD 197.500 R	76 50529	.197	5,0	

Achtung: Umgekehrtes Lochbild
Attention: reversed holes

Bitte T-Nieten verwenden / Please use T-Rivets

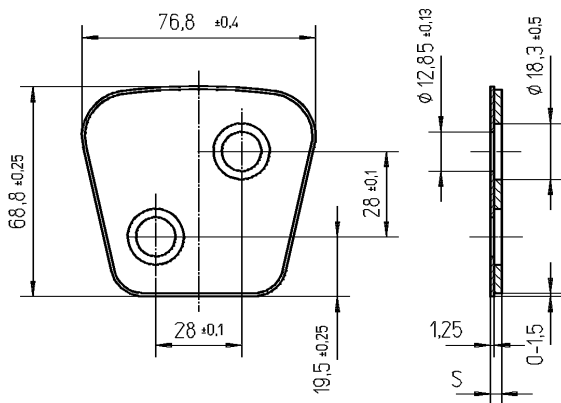
GBD-Segment



Teil Nr. Part no.	Miba Nr. Miba no.	Thickness inch	Stärke mm	Bemerkung Remarks
GBD 148.375	76 50644	.150	3,75	
GBD 156.400	76 50953	.156	4,0	
GBD 173.440	76 50509	.173	4,4	
GBD 187.480	76 50697	.187	4,8	
GBD 218.550	76 60602	.218	5,5	

Bitte TT0-Nieten verwenden / Please use TT0-Rivets

GBD/R-Segment

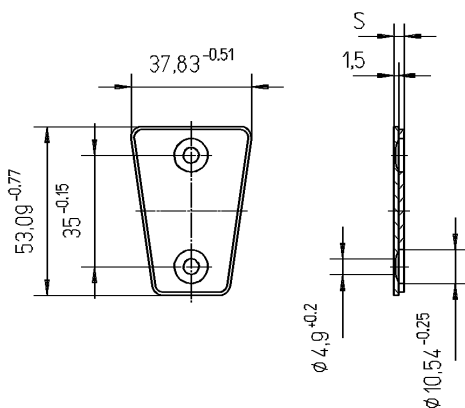


Teil Nr. Part no.	Miba Nr. Miba no.	Thickness inch	Stärke mm	Bemerkung Remarks
GBD 148.375 R	76 50659	.150	3,75	
GBD 156.400 R	76 50660	.156	4,0	
GBD 173.440 R	76 50510	.173	4,4	
GBD 187.480 R	76 50661	.187	4,8	
GBD 218.550 R	76 60603	.218	5,50	

Achtung: Umgekehrtes Lochbild
Attention: reversed holes

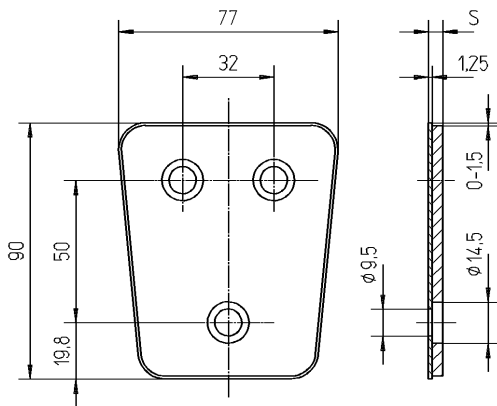
Bitte TT0-Nieten verwenden / Please use TT0-Rivets

Borg&Begg-Segment



Teil Nr. Part no.	Miba Nr. Miba no.	Thickness inch	Stärke mm	Bemerkung Remarks
51913	76 50035	.134	3,4	
JP4 - Rivet	70 50594			

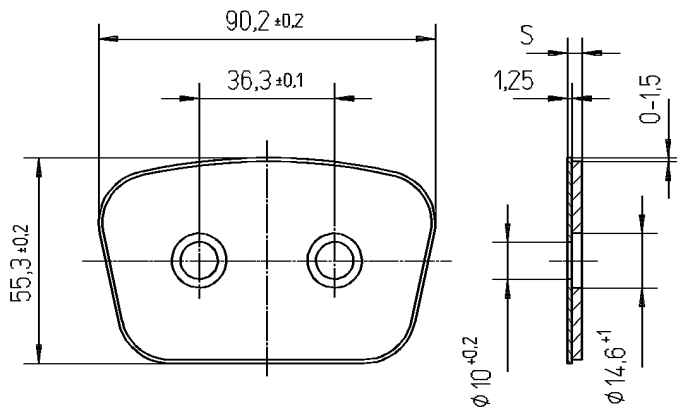
3GB-Segment



Teil Nr. Part no.	Miba Nr. Miba no.	Thickness inch	Stärke mm	Bemerkung Remarks
3GB 197.500	76 50748	.197	5,0	
3GB402.1020	76 50508	.402	10,2	o.r.

Bitte T-Nieten verwenden / Please use T-Rivets

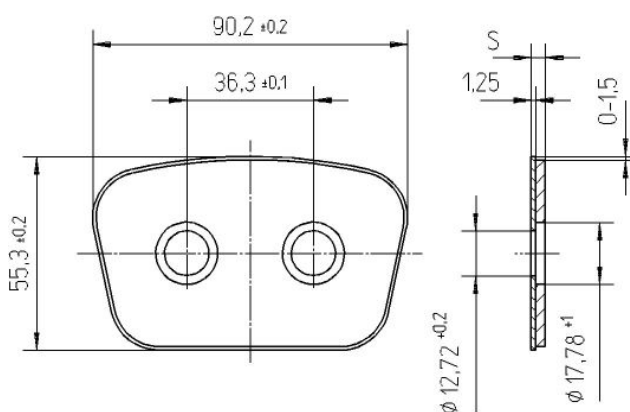
BHG-Segment



Teil Nr. Part no.	Miba Nr. Miba no.	Thickness inch	Stärke mm	Bemerkung Remarks
BHG 156.400	76 50720	.156	4,0	
BHG 173.440	76 50891	.173	4,4	
BHG 197.500	76 50721	.197	5,0	

Bitte T-Nieten verwenden / Please use T-Rivets

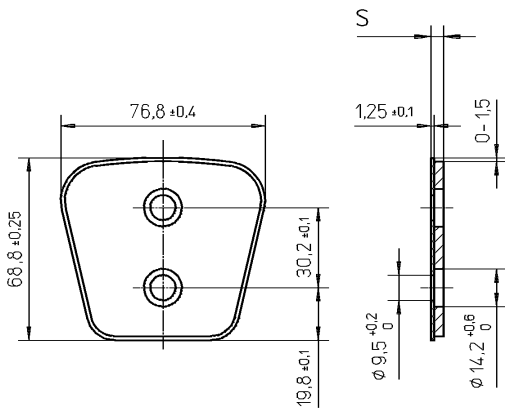
BHG/L-Segment



Teil Nr. Part no.	Miba Nr. Miba no.	Thickness inch	Stärke mm	Bemerkung Remarks
BHG/L 156.400	76 60616	.156	4,0	
BHG/L 173.440	76 60617	.173	4,4	

Bitte TT-Nieten verwenden / Please use TT-Rivets

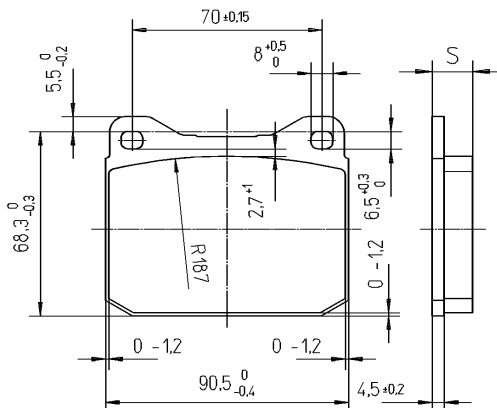
GBK-Segment



Teil Nr. Part no.	Miba Nr. Miba no.	Thickness inch	Stärke mm	Bemerkung Remarks
GBK 187.480	76 50807	.187	4,8	
GBK 197.500	76 50811	.197	5,0	

Bitte T-Nieten verwenden / Please use T-Rivets

SS60-Pad



Teil Nr. Part no.	Miba Nr. Miba no.	Thickness inch	Stärke mm	Bemerkung Remarks
SS60	77 50612	.560	15,0	